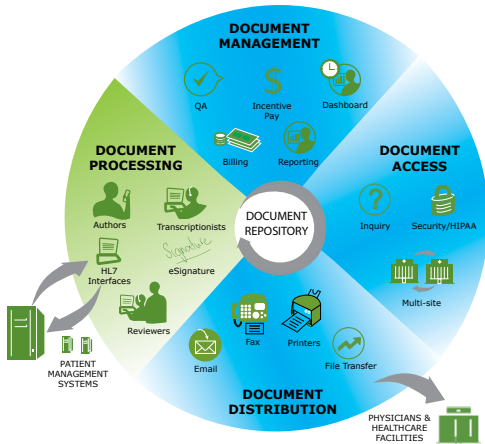


WinScribe Text

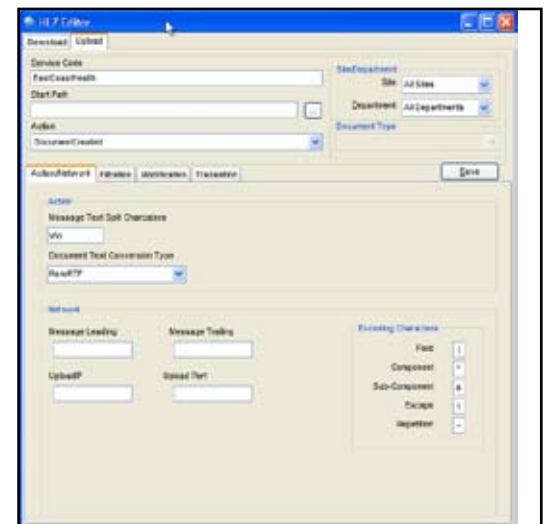
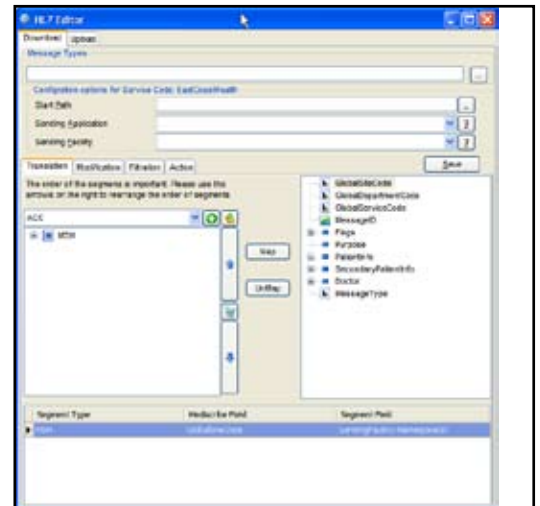
Document Processing - HL7 Interfaces



WinScribe Text's HL7 Interface Engine easily and effectively captures patient demographic, order entry and master file information from all major HIS/CIS/RIS systems and allows for transcribed patient reports to be automatically sent via HL7 to the customer's HIS, EMR, or RIS system. This option easily and effectively captures patient demographic information from HIS/CIS/RIS systems.

FEATURES

- Fully configurable engine – Allows client to fully configure the HL7 service for virtually any need.
- Translation layer – Supports extensive message definitions and mappings.
- User-defined new message types to be received and sent.
- Filtration layer – Provides for filters to be defined to determine criteria for import and export.
- Modification layer – Supports data modification prior to import or export, to or from WinScribe Text.
- Action layer – Allows for definition of message actions as well as granular support to define actions that may be taken on a per message basis, such as add/update patient, add/update doctor, etc.
- Unattended operation – The HL7 engine runs as a Windows service, starting automatically when the computer starts without the need for a user to be logged in.
- High throughput – Receive and process up to 20 ADT messages per second.
- Hot configurable – Configuration changes of message mapping, filtering, modification, and action can be made on the "fly" and applied instantly without needing to restart the service.
- Extendable – Using plug-ins, custom segments can be defined and created.



BENEFITS

- Speeds chart completion
- Adds service/convenience for medical staff
- Promotes JCAHO compliance